



Rescue Accident Assistance Ltd

No Hassle, No Fee, 100% Compensation

0845 299 7790

Common Liability Disputes Factsheet

Example A - Roundabout Collision

Car A coming from south heading towards the north – effectively straight on at the roundabout. In the left hand lane accordingly.

Car B is coming from the East looking to turn right and head North, in the right hand lane accordingly.

So far both vehicles are proceeding correctly.

HOWEVER – Car B sets off. As he is passing the

South Exit, Car A pulls out alongside Car B.

Remember both cars are heading North. But

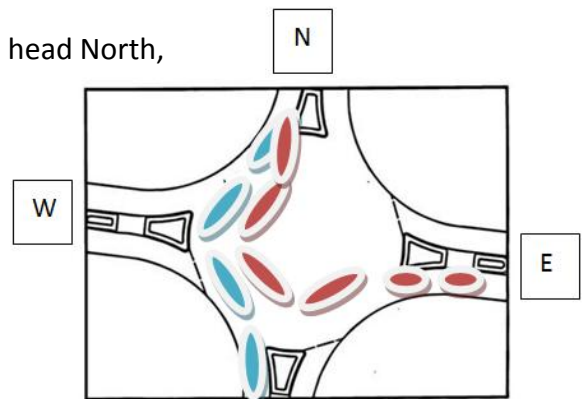
Car B's exit is now blocked by Car A. Car B indicates

as he was on the roundabout first and tries to exit but collides with Car A.

Who is at fault?

You would say Car A as Car B was already on the roundabout and had right of way.

WRONG! Car B is crossing the outside lane to make an exit and is therefore responsible for making sure the exit is clear!



Example B – Junction Collision

You are waiting at a junction behind another vehicle to pull out onto a main road. The vehicle in front rolls backwards and hits your vehicle.

It's his fault right? – WRONG!

Firstly you should have left sufficient distance between the vehicles – its in the highway code – check!

Secondly aside from your word against his, what evidence do you have that you didn't rear end his vehicle? Unless you have independent witnesses (passengers excluded) or CCTV footage then the case will automatically go to the other side!

Example C – Pedestrian Collision

A drunken woman literally walks straight out in front of your car at 2am and despite swerving you hit her. Her own fault right? – WRONG!

Firstly are there any reliable (sober) witnesses who can testify on your behalf? Is there any CCTV footage?

Also what speed were you doing? The argument will always be that it's a Saturday Night and you are driving through town, so you should be looking out for this sort of thing!

Liability is never fully with the pedestrian in these cases, if you are lucky you may get a 50/50 settlement!

100% COMPENSATION – NO FEES PAYABLE BY YOU WIN OR LOSE – SIMPLE PROCESS

www.rescueaccidentassistance.com

Example D – Car Park Collision

You are reversing out of a car park space. You are closely monitoring the traffic which is coming from your left as it's a one way system in the car park. As you are pulling out someone comes up from your right (the wrong way) and you both collide.

He is at fault for going the wrong way right? WRONG!

Regardless of what he was doing he still had right of way and you were pulling out onto the road so to speak so you are to blame! Sorry.

As a general rule if you are reversing anywhere and you collide with anything – YOU ARE TO BLAME!

Example E – Residential Collision

You are waiting to pull out of your drive and a car patiently flashes his headlights to let you out. You start to reverse but then a car comes from the opposite direction and hits you! He is at fault right? WRONG!

Just because one car has decided to be kind and wait for you does not mean the exit is clear both ways and the driver from the other direction has right of way. He is under no obligation to let you out so you are to blame.

Remember: You may think you are not at fault, common sense tells you, you are not at fault, but unfortunately insurers and courts may disagree!

This is not an exhaustive list – if you are unsure give us a call for some free advice. No obligation. 0845 299 7790.

Is The Other Party Blaming You?

>> **Need Someone To Fight Your Corner?** <<

We often take on liability disputes. Is your insurance company dragging their feet? Are you getting a raw deal? Get an honest impartial assessment from us and if we feel you have a good case we can get one of our solicitors fighting for you straight away.

Disclaimer: Rescue Accident Assistance Ltd provides this information as a guide only and accept no liability therein.

100% COMPENSATION – NO FEES PAYABLE BY YOU WIN OR LOSE – SIMPLE PROCESS

www.rescueaccidentassistance.com